

# Power

Power



## B23 Power

## B23 Power

### Kabelsteckverbinder

- Bajonett-Schnellverriegelung
- Hybrider Steckverbinder zur Leistungsversorgung und Ethernet-Datenübertragung über ein Kabel (OCS)
- 9-polig (4 Power+PE + 4-pol. Ethernet-Datenmodul)
- Schutzart IP67 <sup>1)</sup>
- Schraubklemmanschluss

### Flanschsteckverbinder

- Bajonett-Schnellverriegelung
- 9- (4+PE + 4) polig
- Schutzart IP67 <sup>1)</sup>
- THT/Litzen
- Metallgehäuse
- Litzenquerschnitt 4 mm<sup>2</sup>

### Cable Connectors

- Bayonet quick locking system
- Hybrid connector for power supply and Ethernet data transmission over one cable (OCS)
- 9 contacts (4 Power+PE + 4-pol. Ethernet data module)
- Degree of protection IP67 <sup>1)</sup>
- Field-wireable with screw clamp termination

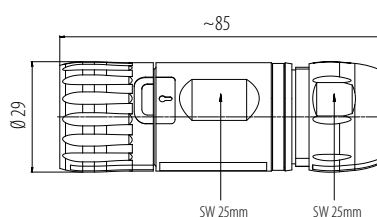
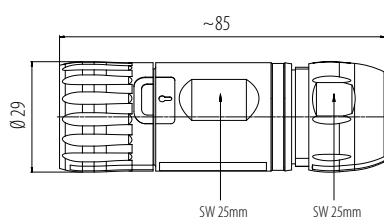
### Panel Mount Connectors

- Bayonet quick locking system
- 9 (4+PE + 4) contacts
- Degree of protection IP67 <sup>1)</sup>
- THT/single wires
- Metal housing
- Wire cross-section 4 mm<sup>2</sup>

<sup>1)</sup> Erläuterung der Schutzarten siehe technische Informationen./ <sup>1)</sup> Explanation of protection standards see technical information.

Kabelstecker, Schraubklemmanschluss, ENP: Power Stift / Daten Buchse  
Male cable connector, screw clamp connection, ENP: power male / data female

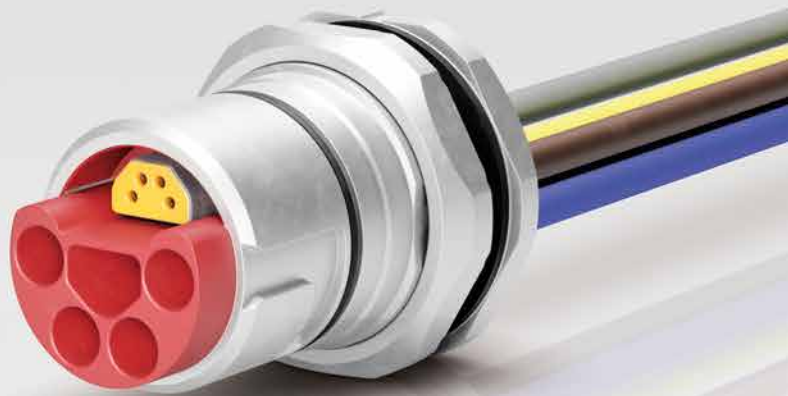
Kabeldose, Schraubklemmanschluss, ENP: Power Buchse / Daten Stift  
Female cable connector, screw clamp connection, ENP: power female / data male



| Polzahl<br>Contacts | Kabeldurchlass<br>Cable outlet | Bestell-Nr.<br>Ordering-No. |
|---------------------|--------------------------------|-----------------------------|
| 4+PE + 4            | 8–17 mm                        | 99 6327 000 09              |

| Polzahl<br>Contacts | Kabeldurchlass<br>Cable outlet | Bestell-Nr.<br>Ordering-No. |
|---------------------|--------------------------------|-----------------------------|
| 4+PE + 4            | 8–17 mm                        | 99 6328 000 09              |

| Polzahl                     | 9 (4+PE + 4)  | Number of contacts       |
|-----------------------------|---|--------------------------|
| Steckverbinder Verriegelung | Bajonett/bayonet  | Connector locking system |
| Anschlussart                | Schraubklemm/screw clamp  | Termination              |
| Anschlussquerschnitt        | 1,5–4 mm <sup>2</sup> (AWG 16–12) mit Aderendhülse Power/with ferrule power, 0,34 mm <sup>2</sup> (AWG 22) mit Aderendhülse Daten/with ferrule data | Wire gauge               |
| Kabeldurchlass              | 8–17 mm   | Cable outlet             |
| Schutzart                   | IP67  | Degree of protection     |
| Mechanische Lebensdauer     | > 100 Steckzyklen/> 100 mating cycles   | Mechanical operation     |
| Obere Grenztemperatur       | + 85 °C   | Upper temperature        |
| Untere Grenztemperatur      | – 30 °C   | Lower temperature        |
| Bemessungsspannung          | 630 V Power/power, 50 V Daten/data  | Rated voltage            |
| Bemessungs-Stoßspannung     | 8000 V Power/power, 1000 V Daten/data   | Rated impulse voltage    |
| Verschmutzungsgrad          | 3 (gesteckt und verriegelt/mated and locked), 2 (im Anschlussbereich/in the connection area)  | Pollution degree         |
| Überspannungskategorie      | III   | Overvoltage categorie    |
| Isolierstoffgruppe          | I   | Material group           |
| Bemessungsstrom (40°C)      | 28 A Power/power, 4 A Daten/data  | Rated current (40 °C)    |
| Material Kontakt            | CuZn (Messing bleifrei/brass lead free)   | Material of contact      |
| Kontaktoberfläche           | Au (Gold/gold)  | Contact plating          |
| Material Kontaktkörper      | PA  | Material of contact body |
| Material Gehäuse            | Zinkdruckguss vernickelt/zinc diecasting nickel plated  | Material of housing      |
| Material Verriegelung       | Zinkdruckguss vernickelt/zinc diecasting nickel plated  | Material of locking      |

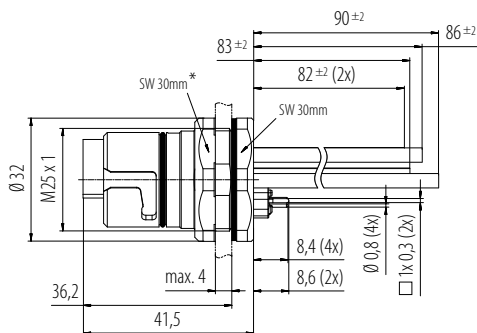


Flanschstecker, mit Litzen, ENP: Power Stift / Daten Buchse  
Male panel mount connector, with single wires, ECP: power pin / data socket

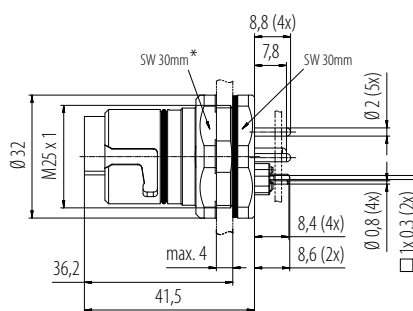
Flanschstecker, THT, ENP: Power Stift / Daten Buchse  
Male panel mount connector, THT, ECP: power pin / data socket



Bohrbilder siehe Seite 24  
Drilling schemes see page 24



\* Sechskantmutter lose beigelegt  
Hexagon nut enclosed loose



\* Sechskantmutter lose beigelegt  
Hexagon nut enclosed loose

| Polzahl<br>Contacts | AQ Litzen<br>WG single wires | Bef.gewinde<br>Fixig thread | Bestell-Nr.<br>Ordering-No. |
|---------------------|------------------------------|-----------------------------|-----------------------------|
| 4+PE + 4            | 4 mm <sup>2</sup>            | M25 x 1                     | 09 6313 000 09              |

| Polzahl<br>Contacts | Befestigungsgewinde<br>Fixig thread | Bestell-Nr.<br>Ordering-No. |
|---------------------|-------------------------------------|-----------------------------|
| 4+PE + 4            | M25 x 1                             | 09 6313 700 09              |

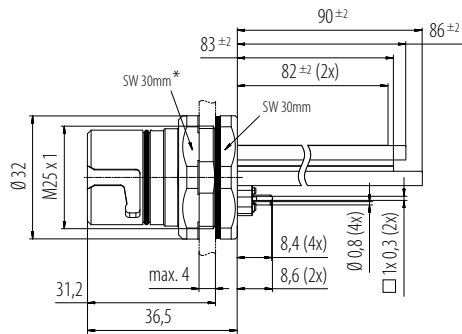
| Polzahl                     | 9 (4+PE + 4)   | Number of contacts       |
|-----------------------------|--|--------------------------|
| Steckverbinder Verriegelung | Bajonett/bayonet                                       | Connector locking system |
| Anschlussart                | Litzen, THT/single wires, THT                          | Termination              |
| Anschlussquerschnitt        | 4 mm <sup>2</sup> (AWG 12) Power/power/—               | Wire gauge               |
| Kabeldurchlass              | —  | Cable outlet             |
| Schutzart                   | IP67   | Degree of protection     |
| Mechanische Lebensdauer     | > 100 Steckzyklen/> 100 mating cycles                  | Mechanical operation     |
| Obere Grenztemperatur       | + 85 °C  | Upper temperature        |
| Untere Grenztemperatur      | - 30 °C  | Lower temperature        |
| Bemessungsspannung          | 630 V Power/power, 50 V Daten/data                     | Rated voltage            |
| Bemessungs-Stoßspannung     | 1500 V Power/power, 800 V Daten/data                   | Rated impulse voltage    |
| Verschmutzungsgrad          | 2  | Pollution degree         |
| Überspannungskategorie      | —  | Overvoltage categorie    |
| Isolierstoffgruppe          | —  | Material group           |
| Bemessungsstrom (40°C)      | 26 A Power/power, 4 A Daten/data                       | Rated current (40 °C)    |
| Material Kontakt            | CuZn (Messing bleifrei/brass lead free)                | Material of contact      |
| Kontaktoberfläche           | Au (Gold/gold)   | Contact plating          |
| Material Kontaktkörper      | PA   | Material of contact body |
| Material Gehäuse            | Zinkdruckguss vernickelt/zinc diecasting nickel plated | Material of housing      |
| Material Verriegelung       | Zinkdruckguss vernickelt/zinc diecasting nickel plated | Material of locking      |

Flanschdose, mit Litzen, ENP: Power Buchse / Daten Stift  
Female panel mount connector, with single wires, ECP: power socket / data pin

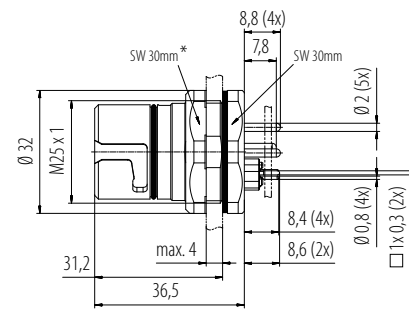
Flanschdose, THT, ENP: Power Buchse / Daten Stift  
Female panel mount connector, THT,ECP: power socket / data pin



Bohrbilder siehe Seite 24  
Drilling schemes see page 24



\* Sechskantmutter lose beigelegt  
Hexagon nut enclosed loose



\* Sechskantmutter lose beigelegt  
Hexagon nut enclosed loose

| Polzahl<br>Contacts | AQ Litzen<br>WG single wires | Bef.gewinde<br>Fixig thread | Bestell-Nr.<br>Ordering-No. | Polzahl<br>Contacts | Befestigungsgewinde<br>Fixig thread | Bestell-Nr.<br>Ordering-No. |
|---------------------|------------------------------|-----------------------------|-----------------------------|---------------------|-------------------------------------|-----------------------------|
| 4+PE + 4            | 4 mm <sup>2</sup>            | M25 x 1                     | 09 6314 000 09              | 4+PE + 4            | M25 x 1                             | 09 6314 700 09              |

| Polzahl                     | 9 (4+PE + 4)   | Number of contacts       |
|-----------------------------|--|--------------------------|
| Steckverbinder Verriegelung | Bajonett/bayonet                                       | Connector locking system |
| Anschlussart                | Litzen, THT/single wires, THT                          | Termination              |
| Anschlussquerschnitt        | 4 mm <sup>2</sup> (AWG 12) Power/power/—               | Wire gauge               |
| Kabeldurchlass              | —  | Cable outlet             |
| Schutzart                   | IP67   | Degree of protection     |
| Mechanische Lebensdauer     | > 100 Steckzyklen/> 100 mating cycles                  | Mechanical operation     |
| Obere Grenztemperatur       | + 85 °C  | Upper temperature        |
| Untere Grenztemperatur      | - 30 °C  | Lower temperature        |
| Bemessungsspannung          | 630 V Power/power, 50 V Daten/data                     | Rated voltage            |
| Bemessungs-Stoßspannung     | 1500 V Power/power, 800 V Daten/data                   | Rated impulse voltage    |
| Verschmutzungsgrad          | 2  | Pollution degree         |
| Überspannungskategorie      | —  | Overvoltage categorie    |
| Isolierstoffgruppe          | —  | Material group           |
| Bemessungsstrom (40°C)      | 26 A Power/power, 4 A Daten/data                       | Rated current (40 °C)    |
| Material Kontakt            | CuZn (Messing bleifrei/brass lead free)                | Material of contact      |
| Kontaktoberfläche           | Au (Gold/gold)   | Contact plating          |
| Material Kontaktkörper      | PA   | Material of contact body |
| Material Gehäuse            | Zinkdruckguss vernickelt/zinc diecasting nickel plated | Material of housing      |
| Material Verriegelung       | Zinkdruckguss vernickelt/zinc diecasting nickel plated | Material of locking      |



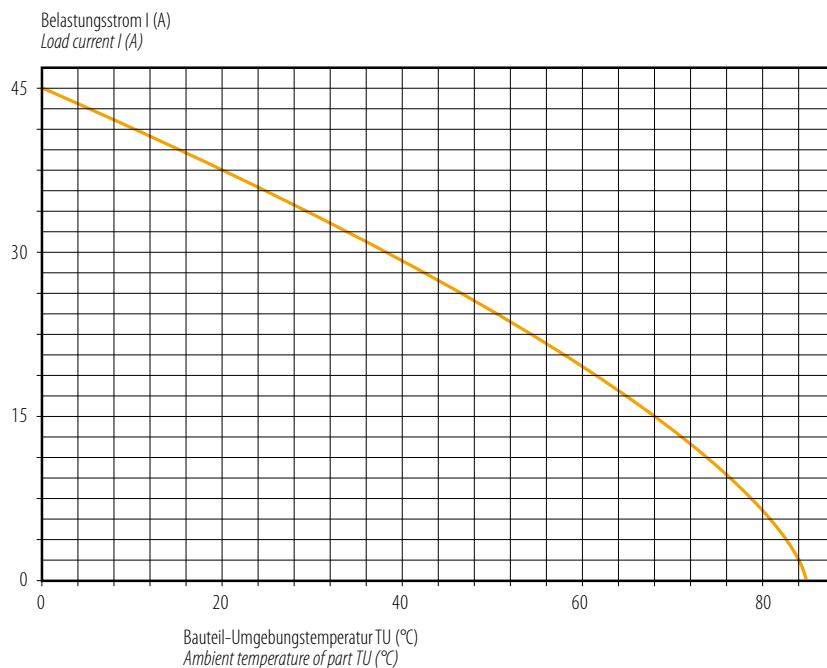


Kennlinien Ratings

Strombelastbarkeitskurve (80 %) nach DIN EN 60512 B23-Kabelsteckverbinder

Derating curve (80 %) according to DIN EN 60512 B23 male cable connectors

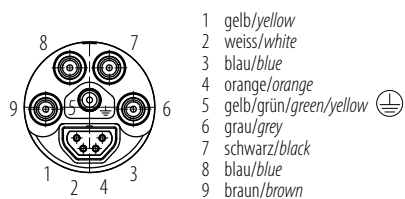
9-polig (4+PE + 4)  
9 pole version (4+PE + 4)



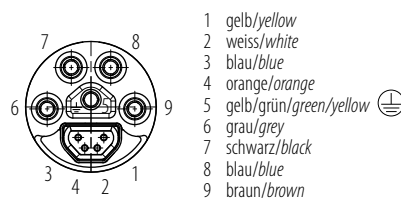
Polbilder (Steckseite) Contact arrangements (mating side)

4+PE + 4 pol  
4+PE + 4 contacts

Power Stift / Daten Buchse Power male / data female

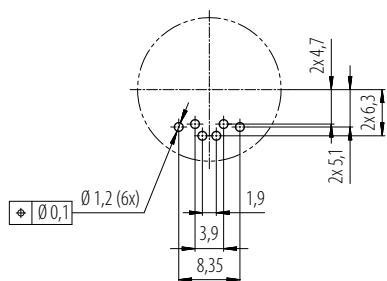


Power Buchse/ Daten Stift Power female / data male

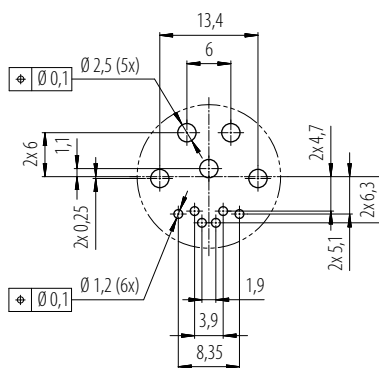


Bohrbilder Datenmodul (Leiterplatte), Litzenversionen Drilling schemes data module (PCB), single wire versions

4+PE + 4 pol  
4+PE + 4 contacts



Bohrbilder Datenmodul (Leiterplatte), Lötversionen Drilling schemes data module (PCB), solder versions



Montageausschnitt Panel cut out

