

B23

Hybrid Connector with Bayonet Quick-Locking



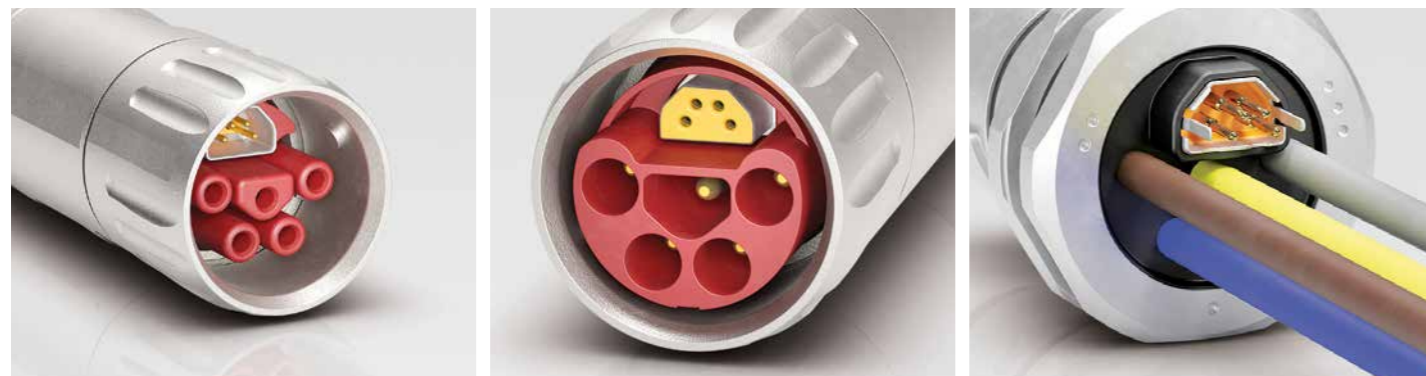
B23

Series	523
Contacts	9 (4 Power+PE + 4 Ethernet data module)
Locking	Bayonet
Cable outlet	8-17 mm
Rated current	28 A Power, 4 A Data
Rated voltage	630 V Power, 50 V Data
Degree of protection	IP67 mated and locked
Contact plating	Au (gold)
Type standard	DIN EN IEC 61076-2-118



523 Series • B23 Hybrid connector with bayonett quick-locking

- Hybrid cabling for One Cable Solution (OCS)
- Bayonet quick-locking system for time-saving installation
- Transmission of power and Ethernet in a single connector
- Ideal for servomotor power supply and hybrid cabling solutions
- Easy field installation thanks to screw clamp termination technology
- Panel mount connectors with single wires or THT termination



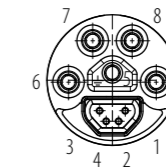
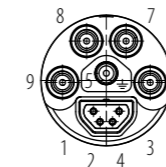
Description	Drawing	Contacts	Cable outlet	Ordering-No.
Male cable connector, screw clamp connection, ENP: Power male / Data female		4+PE + 4	8-17 mm	99 6327 000 09
Female cable connector, screw clamp connection, ENP: Power female / Data male		4+PE + 4	8-17 mm	99 6328 000 09

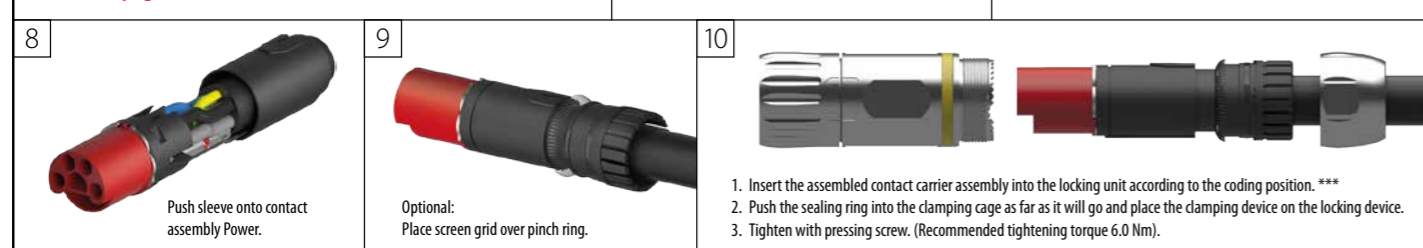
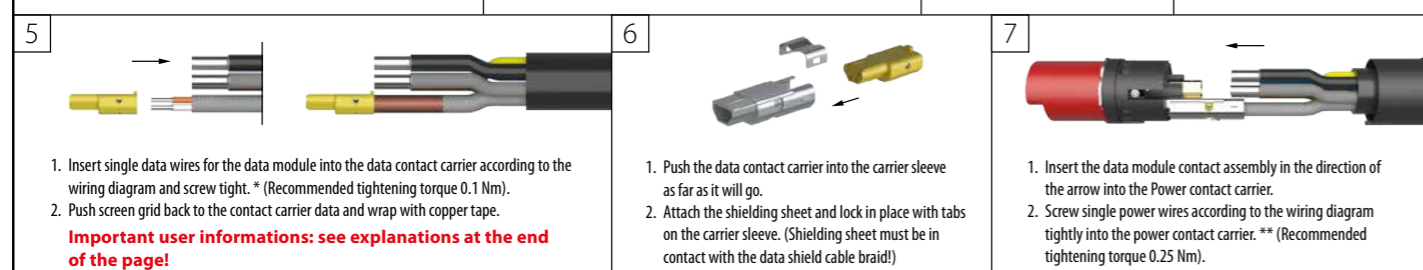
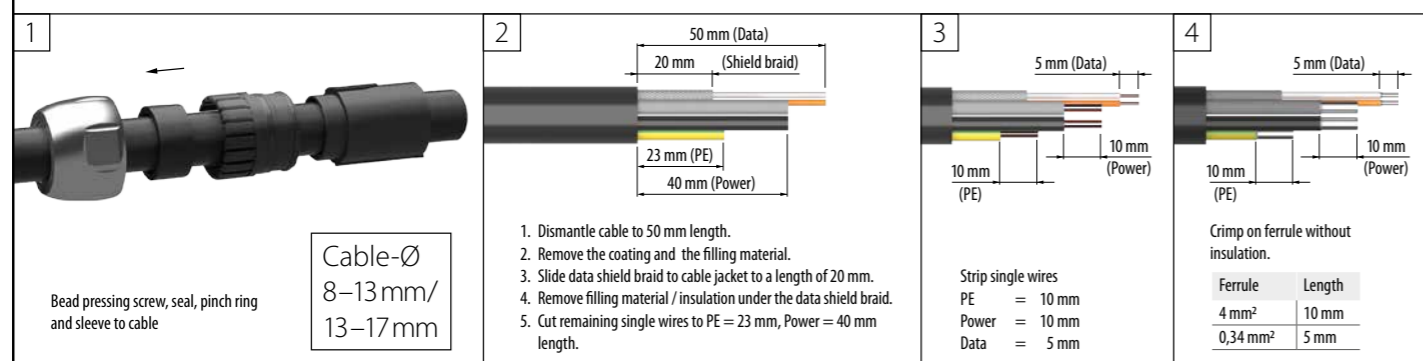
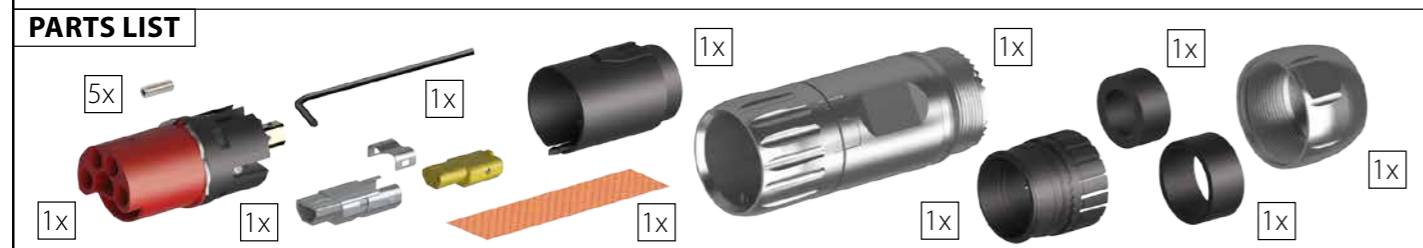
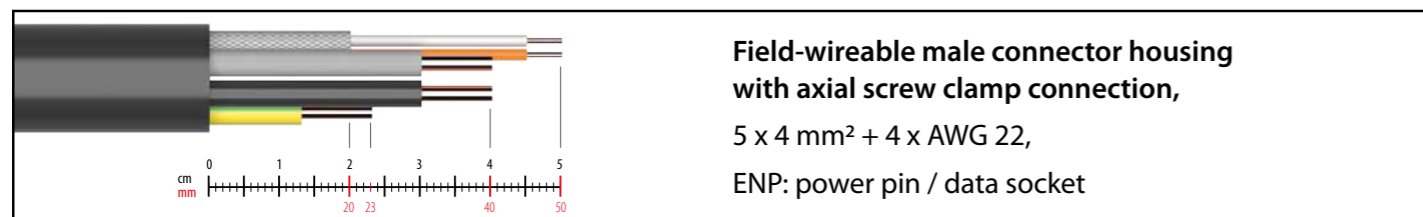
Contact arrangements (mating side)

Power male / Data female

Power female / Data male

4+PE + 4 contacts





CODING

*** Coding Housing

Cod. 1: Protective extra-low voltage <60 V DC / 50 V AC
Cod. 2: Low voltage >60 V DC / 50 V AC
Cod. 3: Mixed voltages

Preferred Position is Coding 2

WIRING DIAGRAM

* Contact carrier Data (5:1)

4-pole colour coding:
1 = yellow
2 = white
3 = blue
4 = orange

** Contact carrier Power (2:1)

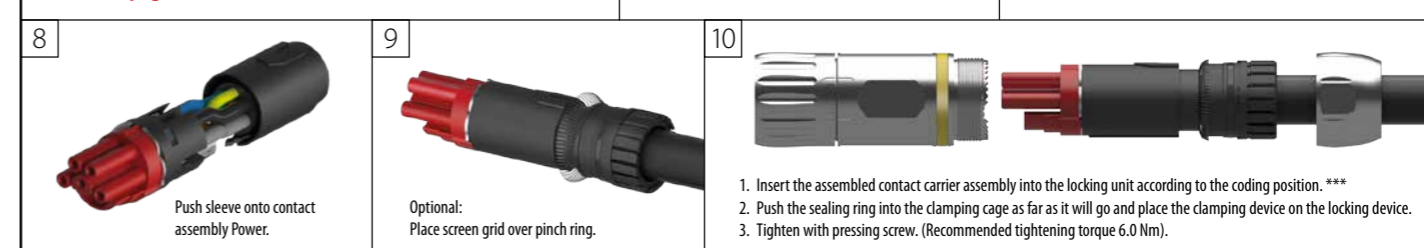
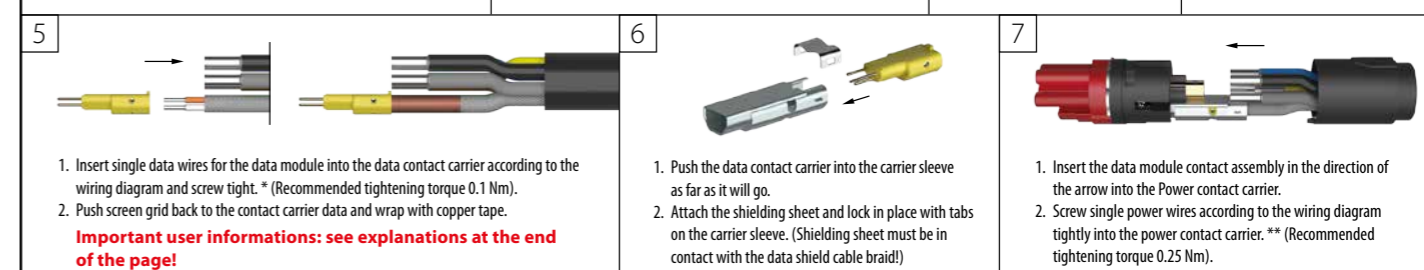
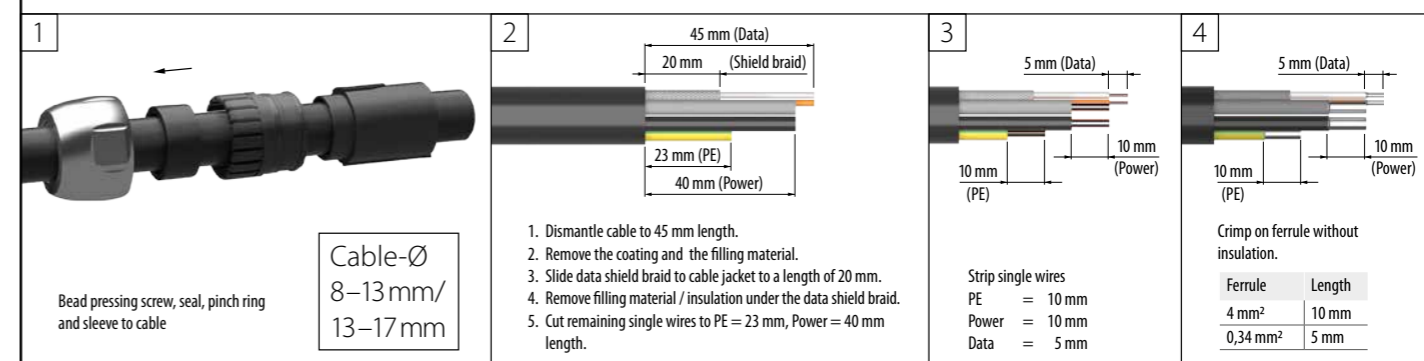
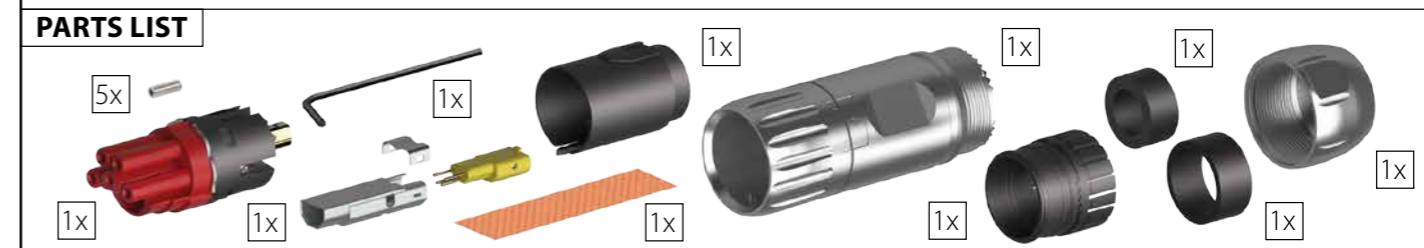
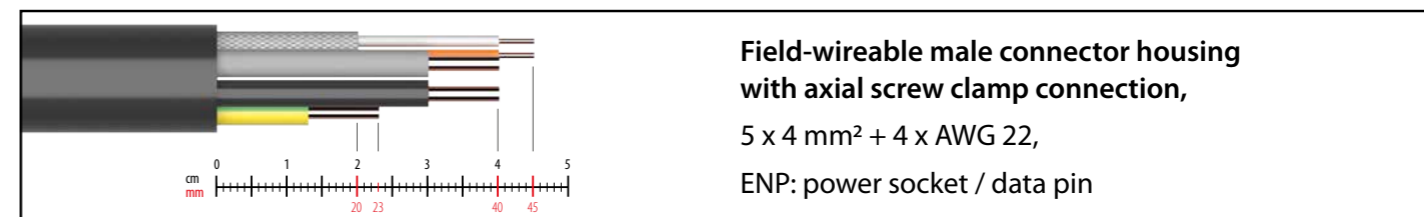
5-pole colour coding:
PE = yellow/green
6 = grey
7 = black
8 = blue
9 = brown

Data module position for cable orientation

! View from cable outlet! Make sure you choose the right colour !

EXPLANATIONS

! Do not pinch the cable and shielding braid. !



CODING

*** Coding Housing

Cod. 1: Protective extra-low voltage <60 V DC / 50 V AC
Cod. 2: Low voltage >60 V DC / 50 V AC
Cod. 3: Mixed voltages

Preferred Position is Coding 2

WIRING DIAGRAM

* Contact carrier Data (5:1)

4-pole colour coding:
1 = yellow
2 = white
3 = blue
4 = orange

** Contact carrier Power (2:1)

5-pole colour coding:
PE = yellow/green
6 = grey
7 = black
8 = blue
9 = brown

Data module position for cable orientation

! View from cable outlet! Make sure you choose the right colour !

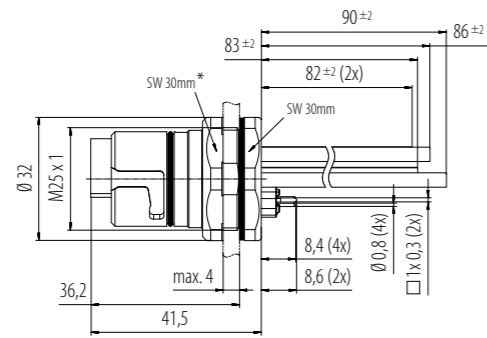
EXPLANATIONS

! Do not pinch the cable and shielding braid. !

Description

Male panel mount connector, with single wires,
ECP: Power male / Data female

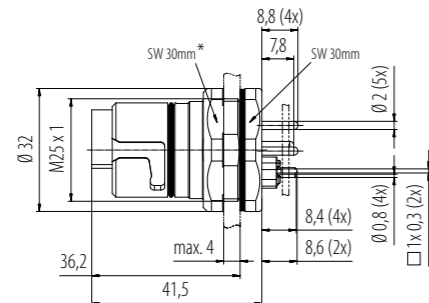
Drawing



* Hexagonal nut enclosed loose

Contacts	Wire gauge	Fixing thread	Ordering-No.
4+PE + 4	4 mm ²	M25 x 1	09 6313 000 09

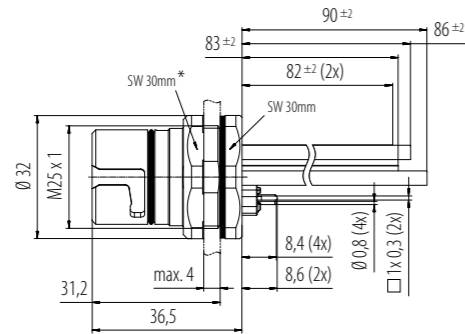
Male panel mount connector, THT,
ECP: Power male / Data female



* Hexagonal nut enclosed loose

4+PE + 4	—	M25 x 1	09 6313 700 09
----------	---	---------	----------------

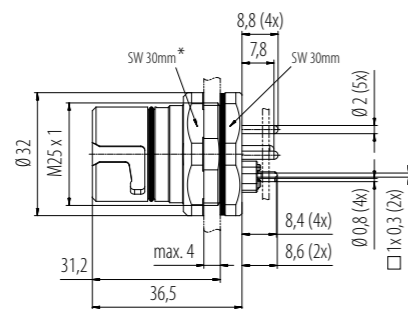
Female panel mount connector, with single wires,
ECP: Power female / Data male



* Hexagonal nut enclosed loose

4+PE + 4	4 mm ²	M25 x 1	09 6314 000 09
----------	-------------------	---------	----------------

Female panel mount connector, THT,
ECP: Power female / Data male



* Hexagonal nut enclosed loose

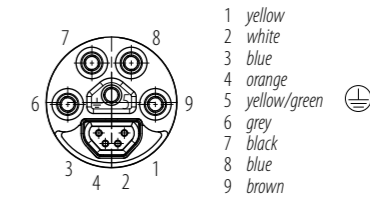
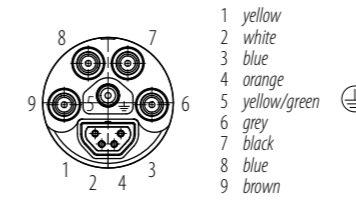
4+PE + 4	—	M25 x 1	09 6314 700 09
----------	---	---------	----------------

Contact arrangements (mating side)

Power male / Data female

Power female / Data male

4+PE + 4 contacts

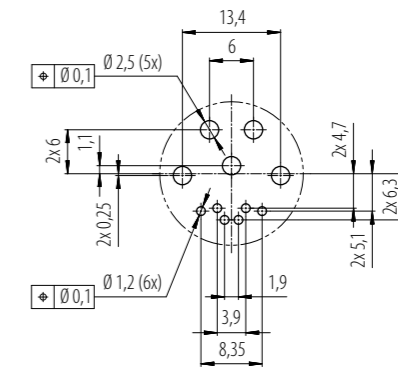
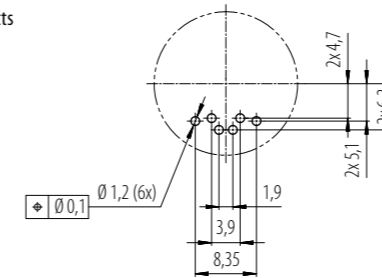


Drilling schemes

Data module (PCB),
single wire versions

Data module (PCB),
solder version

4+PE + 4 contacts



Panel cut out

