

## High Temp./High Pressure Washdown Safe LED Work Light

# CLN-A



### Model Number Configuration

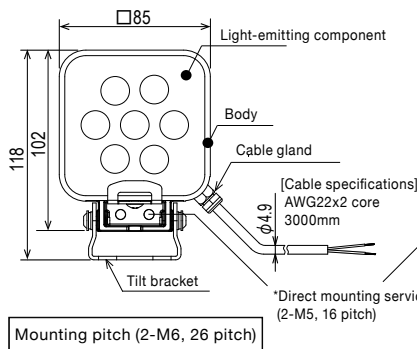
## CLN-24A-CD-T

①

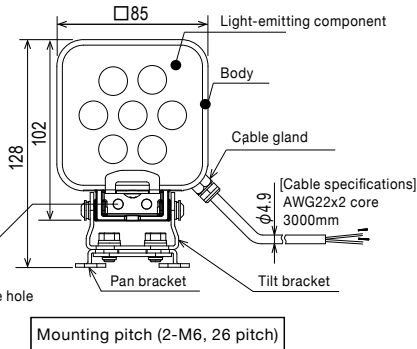
① Mounting  
T = Tilt Type  
PT = Pan/Tilt Type

### Dimensions (mm)

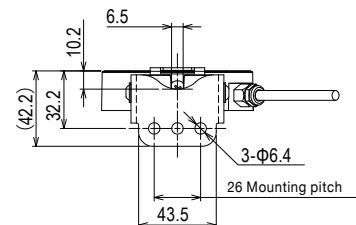
#### Tilt only (T type)



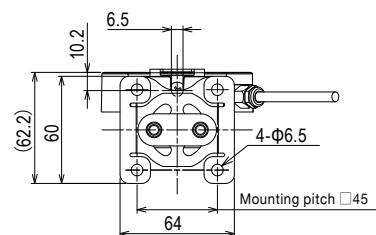
#### Pan/Tilt (PT type)



#### Mounting dimensions (T type)



#### Mounting dimensions (PT type)



### Product List

Model Number	Rated Voltage	Luminous Color	Power Consumption	Mass
CLN-24A-CD-T	24V DC	Daylight	4.2W	0.39kg
CLN-24A-CD-PT	24V DC	Daylight	4.2W	0.46kg

### Specification

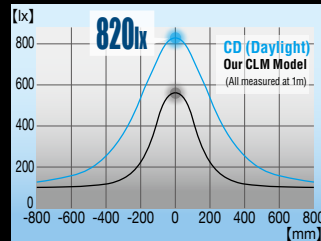
Description	Distance	
Illuminance (Center, typical)	At 1.0m	820lx
	At 2.0m	200lx

**Depth**  
**22.2mm**<sup>\*1</sup>



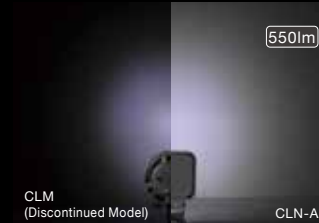
**Brightness** **820lx**

**Light Distribution Characteristics**



Compared to its previous model, the luminance of the CLN-A is 1.6 times greater, giving it a brighter and more distinctive illumination.

**Natural Diffusion(CD:Daylight)**



Compared to its previous model, the CLN-A illuminates a wider area while still maintaining a natural light distribution.

**IP67G**  
**Compliant**

**Water and Oil Resistant**



The CLN-A has a high IP protection rating, and is resistant to water, oil, and coolants used in process machinery. Additionally, the bracket is made of stainless steel to prevent rusting.

**Applications**



**Smooth Surface**



The smooth panel surface helps to prevent accumulation of debris, water, and oil.

**Shows Shadows and Light**

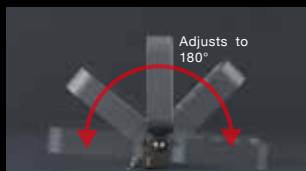


The daylight colored LED achieves clear shadows and edges, making these lights suitable for detailed lighting or light-up displays.

# Flexible and Versatile



**Tilt Type (T Type)**



The up/down angle of the body can be adjusted 180°, and can be folded to a width of 33mm for ease of mounting.



**Pan/Tilt Type (PT Type)**



The up/down angle of the body can be adjusted 180°, as well as 120° for left/right angles. It can be folded to a width of 43mm for ease of mounting.

**Floor Mount Example**



**Wall Mount Example**



**Ceiling Mount Example**



**Floor Mount Example**



**Wall Mount Example**



**Ceiling Mount Example**



\* The tilt & pan/tilt brackets can also be removed for Rear Attachment applications.