

WH-A/WK-A

Revolving Warning Light



Bulb



1 Alarm Sound (WHB-A Only)

90dB at 1m (WHB-A Only)

IP54

Ø100



WH-A

WK-A



Model **DEB LED Lamp**
Recommended Product
For more details on Model DEB
Refer to the "Replacement Bulb"
Section at the end of this Catalog



Easily attachable to an electrical box with easy wiring to a terminal block.



Install in various directions when using for indoor applications.

- Sideways
- Upside-down



When installing the WHB, direct the buzzer in a downward direction.

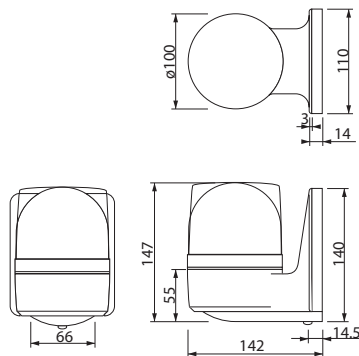
Wall-mount Revolving Warning Light featuring easy wiring with terminal block.

FEATURES

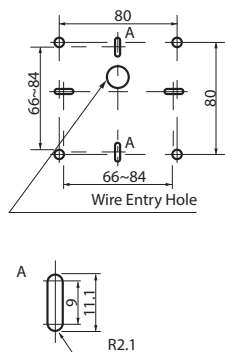
- Has the CE mark and conforms to the requirements (12V, 24V type only) for the EC directive.
- Upright, inverted, and sideways installation allowed for indoors as well as outdoors*.
- Dome is made from superior weather-resistant and light-translucent acrylic resin.
- Rotating parabolic reflector to enhance visibility from a distance.
- Compact motor with high durability and energy-efficient characteristics.
- Vibration-resistant automobile bulb for extended bulb life.
- Main body is made of impact and heat resistant ABS resin.
- Available Colors are Red, Amber, Green, and Blue.
- Uses a terminal block for easy wiring.

*WHB installation is upright only for outdoor use.

Dimensions



Mounting Dimensions



(Unit: mm)

Specifications

Model	Rated Voltage	Current Consumption	Flash Rate (fpm)	Bulb		Mass
				Ratings	Repl. No.	
WK-12A	DC 12V	0.8A	170	12V 10W	9	550g
WH-24A	DC 24V	0.5A		24V 10W	10	
WK-24A						
WH-100A	AC 100V	0.07A		12V 5W	12	750g
WK-100A						
WH-120A	AC 120V	0.08A				
WK-120A						
WH-200A	AC 200V	0.04A				
WK-200A						
WKB-12A	DC 12V	0.85A		12V 10W	9	550g
WHB-24A	DC 24V	0.5A		24V 10W	10	
WKB-24A						
WHB-100A	AC 100V	0.07A		12V 5W	12	750g
WKB-100A						
WHB-120A	AC 120V					
WKB-120A						
WHB-200A	AC 200V	0.04A				
WKB-200A						

How to Order

Model	Color
WK-A	R: Red
WH-A	Y: Amber
	G: Green
	B: Blue
Alarm	Rated Voltage
None: Without	12 : DC 12V
B: With	24 : DC 24V
	100: AC 100V
	120: AC 120V
	200: AC 200V