

# WH-A/WK-A

## Revolving Warning Light



**Bulb**



**1 Alarm Sound** (WHB-A Only)

**90dB at 1m** (WHB-A Only)

**IP54**

**Ø100**



WH-A

WK-A



Model **DEB LED Lamp**  
**Recommended Product**  
For more details on Model DEB  
Refer to the "Replacement Bulb"  
Section at the end of this Catalog



Easily attachable to an electrical box with easy wiring to a terminal block.



**Install in various directions when using for indoor applications.**

- Sideways
- Upside-down



When installing the WHB, direct the buzzer in a downward direction.

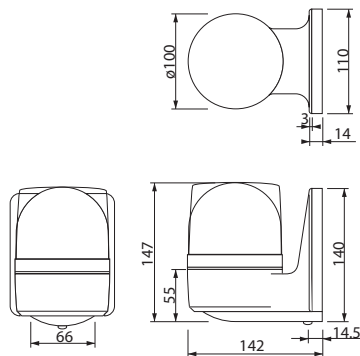
## Wall-mount Revolving Warning Light featuring easy wiring with terminal block.

### FEATURES

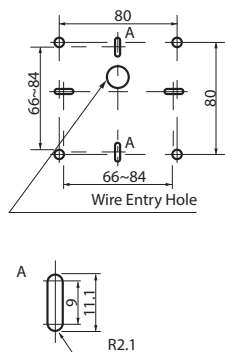
- Has the CE mark and conforms to the requirements (12V, 24V type only) for the EC directive.
- Upright, inverted, and sideways installation allowed for indoors as well as outdoors\*.
- Dome is made from superior weather-resistant and light-translucent acrylic resin.
- Rotating parabolic reflector to enhance visibility from a distance.
- Compact motor with high durability and energy-efficient characteristics.
- Vibration-resistant automobile bulb for extended bulb life.
- Main body is made of impact and heat resistant ABS resin.
- Available Colors are Red, Amber, Green, and Blue.
- Uses a terminal block for easy wiring.

\*WHB installation is upright only for outdoor use.

### Dimensions



### Mounting Dimensions



(Unit: mm)

### Specifications

| Model    | Rated Voltage | Current Consumption | Flash Rate (fpm) | Bulb    |           | Mass |
|----------|---------------|---------------------|------------------|---------|-----------|------|
|          |               |                     |                  | Ratings | Repl. No. |      |
| WK-12A   | DC 12V        | 0.8A                | 170              | 12V 10W | 9         | 550g |
| WH-24A   | DC 24V        | 0.5A                |                  | 24V 10W | 10        |      |
| WK-24A   |               |                     |                  |         |           |      |
| WH-100A  | AC 100V       | 0.07A               |                  | 12V 5W  | 12        | 750g |
| WK-100A  |               |                     |                  |         |           |      |
| WH-120A  | AC 120V       | 0.08A               |                  |         |           |      |
| WK-120A  |               |                     |                  |         |           |      |
| WH-200A  | AC 200V       | 0.04A               |                  |         |           |      |
| WK-200A  |               |                     |                  |         |           |      |
| WKB-12A  | DC 12V        | 0.85A               |                  | 12V 10W | 9         | 550g |
| WHB-24A  | DC 24V        | 0.5A                |                  | 24V 10W | 10        |      |
| WKB-24A  |               |                     |                  |         |           |      |
| WHB-100A | AC 100V       | 0.07A               |                  | 12V 5W  | 12        | 750g |
| WKB-100A |               |                     |                  |         |           |      |
| WHB-120A | AC 120V       |                     |                  |         |           |      |
| WKB-120A |               |                     |                  |         |           |      |
| WHB-200A | AC 200V       | 0.04A               |                  |         |           |      |
| WKB-200A |               |                     |                  |         |           |      |

### How to Order

| Model         | Color         |
|---------------|---------------|
| WK-A          | R: Red        |
| WH-A          | Y: Amber      |
|               | G: Green      |
|               | B: Blue       |
| Alarm         | Rated Voltage |
| None: Without | 12 : DC 12V   |
| B: With       | 24 : DC 24V   |
|               | 100: AC 100V  |
|               | 120: AC 120V  |
|               | 200: AC 200V  |