

# SKH-A

## Revolving Warning Light



Model **DEB LED Lamp**  
**Recommended Product**  
 For more details on Model DEB  
 Refer to the "Replacement Bulb"  
 Section at the end of this Catalog



### Bulb



**1** Alarm Sound (SKHB)

**90**dB at 1m (SKHB)

**IP56** (SKH-SA, others IP23)

**Ø118**



## Corrosion-proof plastic Revolving Warning Light for a variety of applications.

### FEATURES

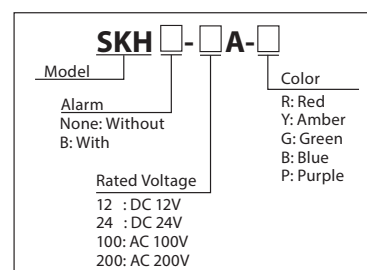
- Rotating parabolic reflector to enhance visibility from a distance.
- Vibration-resistant automobile bulb for extended bulb life.
- Includes an internal alarm of 90dB (at 1m) that is synchronized with the light operation.
- Upright, inverted, and sideways installation allowed for indoors\* as well as outdoors.
- Dome is made from superior weather-resistant and light-translucent acrylic resin.
- Available Colors are Red, Amber, Green, and Blue.
- Has the CE mark and conforms to the requirements (for 12V, 24V type only) for the EC directive.

\*SKH-SA installation allows upright and inverted installation only for indoor use.

### Specifications

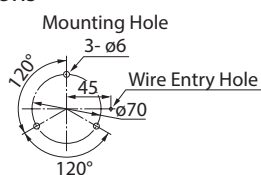
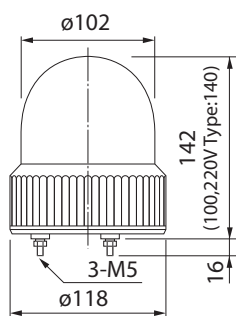
Model	Rated Voltage	Current Consumption	Flash Rate (fpm)	Bulb		Mass
				Ratings	Repl. No.	
SKH-101A/SKHB-12A	DC 12V	0.8A	170	12V 10W	9	400g
SKH-102A/SKHB-24A	DC 24V	0.5A		24V 10W	10	400g
SKH-110A/SKHB-100A	AC 100V	0.065A		12V 5W	12	600g
SKH-112A/SKHB-120A	AC 120V	0.07A		24V 10W	10	400kg
SKH-120A/SKHB-200A	AC 200V	0.03A		12V 5W	12	600g
SKH-102SA	DC24V	0.5A		24V 10W	10	400kg
SKH-110SA	AC 100V	0.1A		12V 5W	12	600g

### How to Order

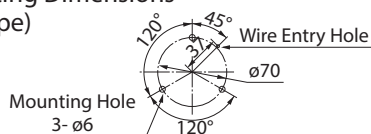


### Dimensions

#### Mounting Dimensions (DC Type)



#### Mounting Dimensions (AC Type)



(Unit: mm)