

RKEM/ RHEM

Super-bright LED Revolving Warning Light



RHEM

RKEM



LED

IP55 (with SZ-200A)

 $\Phi 100$

Brushless Motor

Compact LED revolving warning light featuring one super-bright LED chip with an enhanced dispersion reflection system and brushless motor.

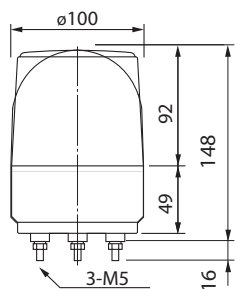
FEATURES

- Has the CE mark and conforms to the requirements (for 12V, 24V type only) for the EC directive.
- Brushless compact motor with high durability and long-lasting characteristics.
- Dome lens is made of impact and heat resistant polycarbonate resin.
- Energy-efficient by using only 1 LED chip which is super-bright.
- Main body is made of impact and heat resistant ABS resin.
- Colors available are Red, Amber, Green, and Blue.
- Uses a terminal block for easy wiring.

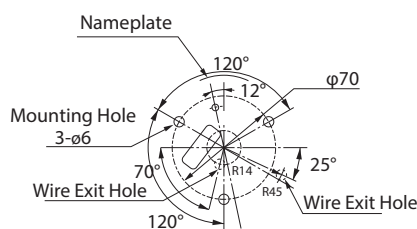
How to Order

RKEM -	
Model RKEM RHEM	Color R: Red Y: Amber G: Green B: Blue
Rated Voltage 12 : DC 12V 24 : DC 24V M2 : AC 100 - 200V	

Dimensions



Mounting Dimensions

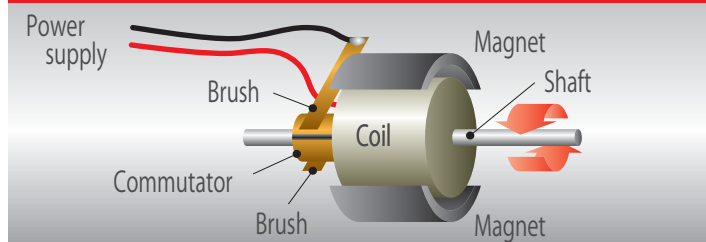


(Unit: mm)

Specifications

Model	Rated Voltage	Current Consumption	Flash Rate	Mass
RKEM-12	DC 12V	0.20A	120 fpm	400g
RKEM-24	DC 24V	0.14A		
RKEM-M2	AC 100-200V	0.20A-0.06A		
RHEM-12	DC 12V	0.20A		
RHEM-24	DC 24V	0.14A		
RHEM-M2	AC 100-200V	0.20A-0.06A		

Conventional Motor Construction



Brushless Motor Construction

