

Network Monitor Signal Tower



LED



4 Alarm Sounds

80db at 1m

Φ60

Network

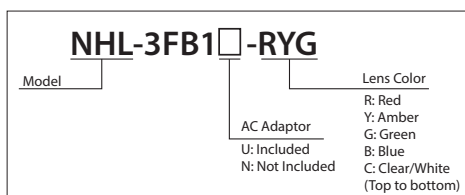


Network Monitoring With a New Look

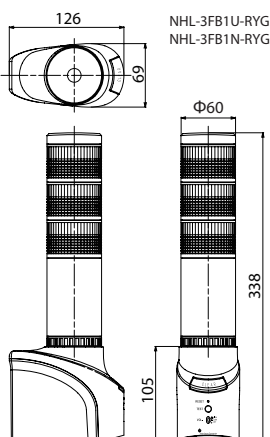
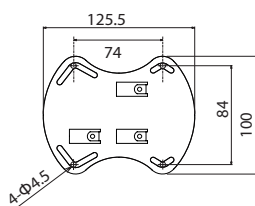
FEATURES

- Not dependent upon the OS.
- Supports common protocols such as HTTP, SMTP, SNMP and includes RSH.
- Easily works with NMS (network management/integration / monitoring) software, etc.
- Easily controllable by the SNMP SET command and RSH commands.
- Conforms to the CE requirements. (AC Adaptor does not carry the CE mark.)
- Four different alarm sounds can be correlated to match the prioritized monitoring level.
- Contains the ICMP protocol so PING monitoring can be set up for a maximum of 24 nodes.
- Using the IP Address of the NHL Tower, detailed setup functions can be accessed via a browser.

How to Order



Dimensions (Unit: mm)

Upright Base
(Standard Item)

Specifications

Model		NHL-3FB1U-RYG			NHL-3FB1N-RYG			
AC Adaptor	Rated Voltage	AC 100V to 240V			-			
	Operating Voltage Range	AC 90V to 264V			-			
Main Unit	Rated Voltage	DC 24V						
	Power Consumption	Unit	Red	Amber	Green	Blue	White	Buzzer
		2.0W	1.5W	1.5W	0.8W	0.8W	0.8W	2.0W
Operating Temperature Range		0°C - +40°C						
Storage Temperature Range		-10°C - +60°C						
Relative Humidity		RH of 20 to 80% (No Condensation)						
Vibration Resistance		19.6m/s ²						
Protection Rating		IP20 (Not Waterproof)						
Alarm Sound	Audio Level	Three-position switch for "HIGH", "LOW", "OFF" "HIGH": 80dB or more "LOW": 70dB or less (Tested at 1m from diaphragm in upright position)						
	Tone Pattern	Four distinctive patterns: (Slow Intermittent), (Fast Intermittent), (Fast Burst), (Continuous)						
Switches	"CLEAR"	Pushbutton Switch						
	"TEST"	Pushbutton Switch						
	"RESET"	Pushbutton Switch						
	"BUZZER"	Slide Switch						
Communication Method	Ethernet	Physical Layer: 10BASE-T/100BASE-TX (Auto-negotiation/Full Duplex/ Half Duplex)						
		Data Link Layer: CSMA/CD						
		Network Link Layer: IP / ARP / ICMP						
		Transport Layer: TCP / UDP						
Mounting	Location	Indoors Only						
	Direction	Desktop or Wall-mount in the Upright Position						
Mass		800g (AC Adaptor not included)						
Accessories		AC Adaptor, Rubber Feet, Adhesive Tape, Support Base			Rubber Feet, Adhesive Tape, Support Base			

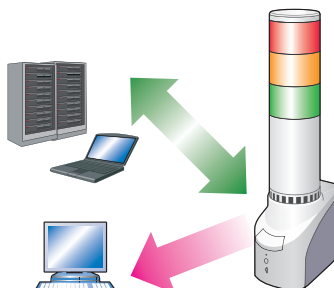
Easy Integration for many system applications

PING Device Monitor

Monitors Device Existence on the Network

The NH Tower initiates PING interaction with network devices to verify existence of up to 24 nodes. When the response to a PING fails, a warning with light and sound occurs to alert administrators.

Among the 24 nodes, 12 nodes (13th - 24th) can be set up for more detailed monitoring parameters.



Application Monitor

The tower can monitor important background applications and signal the administrator upon any failure.

SNMP v1-v2c

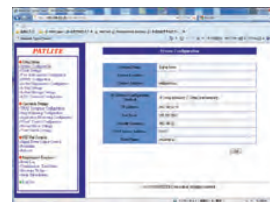
Monitor networking equipment at a low cost

Many network devices (UPS, printers, routers, switches, etc.) generate SNMP TRAP messages when a failure occurs. The NHL tower can trigger a light and sound signal based on these SNMP TRAP messages to alert the administrator.

It can distinguish the various TRAPS. Register up to 16 groups (4 nodes per group).

Easy setup from a web browser

Detailed tower setup is accessed from a web browser directly to its IP Address. Firmware can also be upgraded remotely.

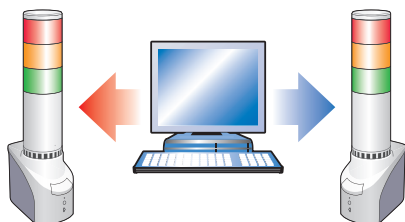


Web Setup Screen

Communication Commands for many customized applications

RSH

The RSH protocol is flexible with easily controllable commands. With the use of Network integrated management software; event information obtained from various monitoring tools etc., can be used as a trigger to cause a combination of flashing and alarm patterns to sound in synchronicity with the event.



Event Occurrence: Command Tier to light, alarm to sound.

RSH Example Code: rsh 192.168.10.1 -l root alert 111001

SOCKET Transmission

PHN Command Compatibility

Controlled with 2 byte commands.

* Compatible with NHE-3FB, NHC-3FB, NHM-3FB, and PHN-3FBE1.

* Some functionality is limited.

Event Occurrence: Command Tier to light, alarm to sound
PHN Example Code: 0x57,0x17

New PNS Command Compatibility

The PNS command can be used to control all pattern information.

* The PNS command is a unique command from PATLITE.

Event Occurrence: Command Tier to sound alarm

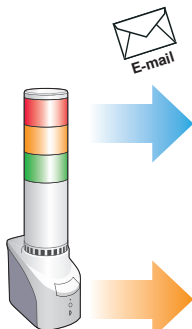
PNS Example Code:
0x58,0x58,0x53,0x00,0x00,0x06,0x01,0x01,0x01,0x00,0x00,0x01

Diagnostic / Reporting/ Notification Features

E-mail Transmission

Send e-mail with a maximum of eight selectable events

Up to eight events can be created and sent as a secure e-mail with the subject name and text corresponding to the event.



SNMP v2c

SNMP TRAP Transmission

Can transmit from a maximum of eight network devices.

Self-diagnosis



The test switch on the front of the Body can check the Signal Tower and alarm operation functions easily without it being controlled through the network.

Options

